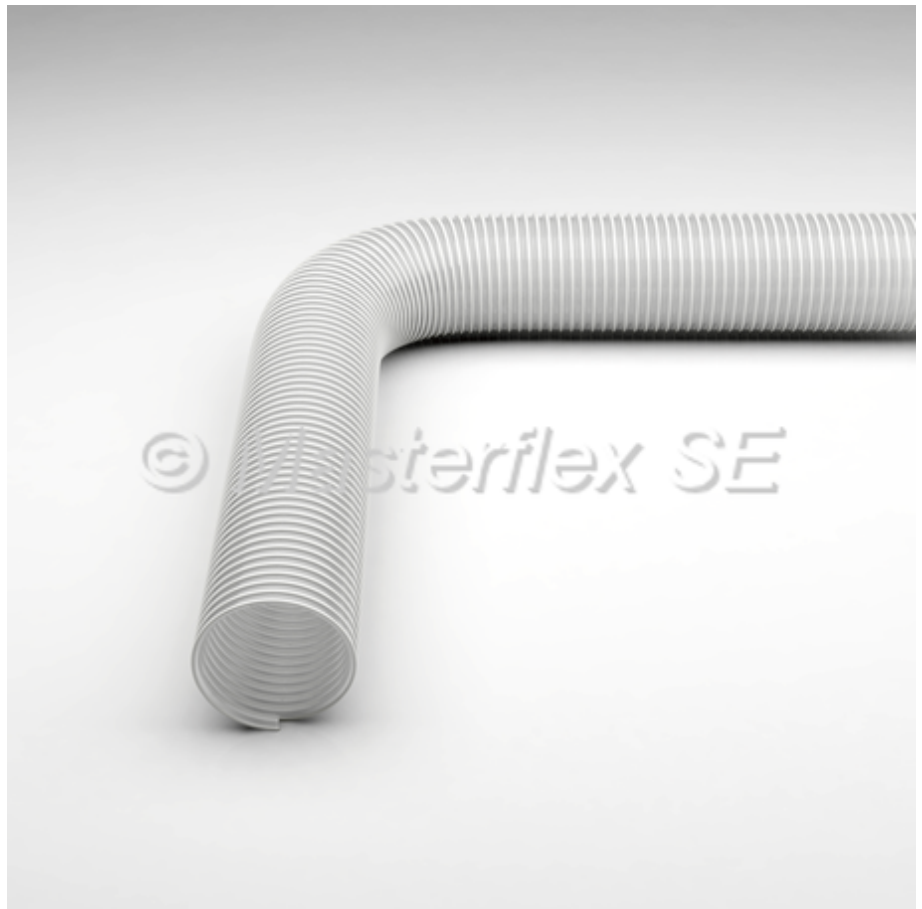


Master-PUR HX Food

PU Suction & Transport Hose, heavy-duty, food-grade (FDA)



Material

- wall: pure polyether polyurethane, food-grade quality (FDA)
- spiral: anti-rust spring steel wire (material no. 1.4310)
- wall thickness between spirals approx. 1.7 - 2.1 mm, depending on DN

Applications

- Pharmaceutical industry
- Suction & transport hose for the food industry
- Chemicals

Properties

- extremely abrasion resistant via specific reinforcements underneath the spiral
- increased pressure and vacuum resistance
- mostly smooth inner lining
- optimum flow characteristics
- flexible
- microbe and hydrolysis-resistant
- odourless/tasteless
- hoses comply with the following European food regulations:
 - EU Regulations 1935/2004, 10/2011 and 1282/2011
- materials comply with the following food regulations:
 - FDA 21 CFR §177.2600
 - FDA 21 CFR §178.2010
-

- high tensile strength
- halogen and plasticizer-free
- gas-tight
- generally good UV and ozone resistance
- good chemical resistance

Product Variations

DN	Betriebs- druck ca. bar	vacuum c. bar	Biegeradius ca. mm*	Außen-Ø ca. mm	Gewicht ca. kg/m	Artikel-Nr.	Lager- längen	Fertigungs- längen
32	4,85	0,94	80	42	0,66	114-032-501	/	10m
40	4,27	0,94	100	50	0,83	114-040-501	/	10m
50	4	0,94	125	61	1,04	114-050-501	10m	10m
55	3,75	0,89	140	65	1,1	114-055-501	/	10m
60	3,6	0,89	150	70	1,2	114-060-501	10m	10m
65	3,3	0,89	165	75	1,29	114-065-501	10m	10m
70	3,15	0,89	175	80	1,38	114-070-501	10m	10m
75	2,92	0,89	190	87	1,61	114-075-501	10m	10m
80	2,77	0,89	200	93	1,93	114-080-501	10m	10m
90	2,4	0,89	225	103	2,16	114-090-501	/	10m
100	2,1	0,87	250	115	2,6	114-100-501	10m	10m
110	1,95	0,87	275	124	2,82	114-110-501	/	10m
115	1,8	0,87	290	129	2,94	114-115-501	/	10m
120	1,65	0,87	300	134	3,07	114-120-501	/	10m
125	1,65	0,87	315	140	3,44	114-125-501	10m	10m
130	1,65	0,84	325	145	3,54	114-130-501	/	10m
140	1,5	0,83	350	153	3,81	114-140-501	/	10m
150	1,5	0,82	450	167	4,13	114-150-501	10m	10m

All data refers to a medium and ambient temperature of +20 °C.

* Refers to the inner hose lining

Subject to technical changes and colour deviations.

Temperature Range

- -40°C to +90°C
- peaks to +125°C

Available from stock

- Available from stock in the above listed lengths and sizes.

Available on request

- Available on request in other lengths, sizes and colours, with print.

Connections



Combiflex PU Cast-On Connectors, Food



Hose Clamp with Bolts

Construction

